

2007 – Present

Other Selected Works



Entangled Image (Short-beaked common dolphins). 2013
Ink jet print mounted on sintra, steel beams
82 x 60 x 42 inches



Entangled Image (Parasitic jaeger). 2014
Ink jet print mounted on sintra, steel beams
84 x 30 x 36 inches



Entangled Image (Humpback whale). 2013
Ink jet print mounted on sintra, steel beams
82 x 52 x 44 inches



Entangled Image (Elegant terns). 2014
Ink jet print mounted on sintra, steel beams
72 x 54 x 36 inches



Myopic Wall Composition (with reclaimed mantel and bluestone). 2013
MDF, wood, paint, bluestone, metal scaffold
70 x 55 x 24 inches



Myopic Wall Composition (with reclaimed mantel and bluestone) 2013
Posterior view



Turtle stop. 2010
Perlite, lime, sand, turtle shell
32 x 20 x 7 inches



InterOceanica Highway, Peru>Brazil. 2011
Images from a journey across the InterOceanic highway construction – the world's largest road building project linking the Pacific with the Atlantic by

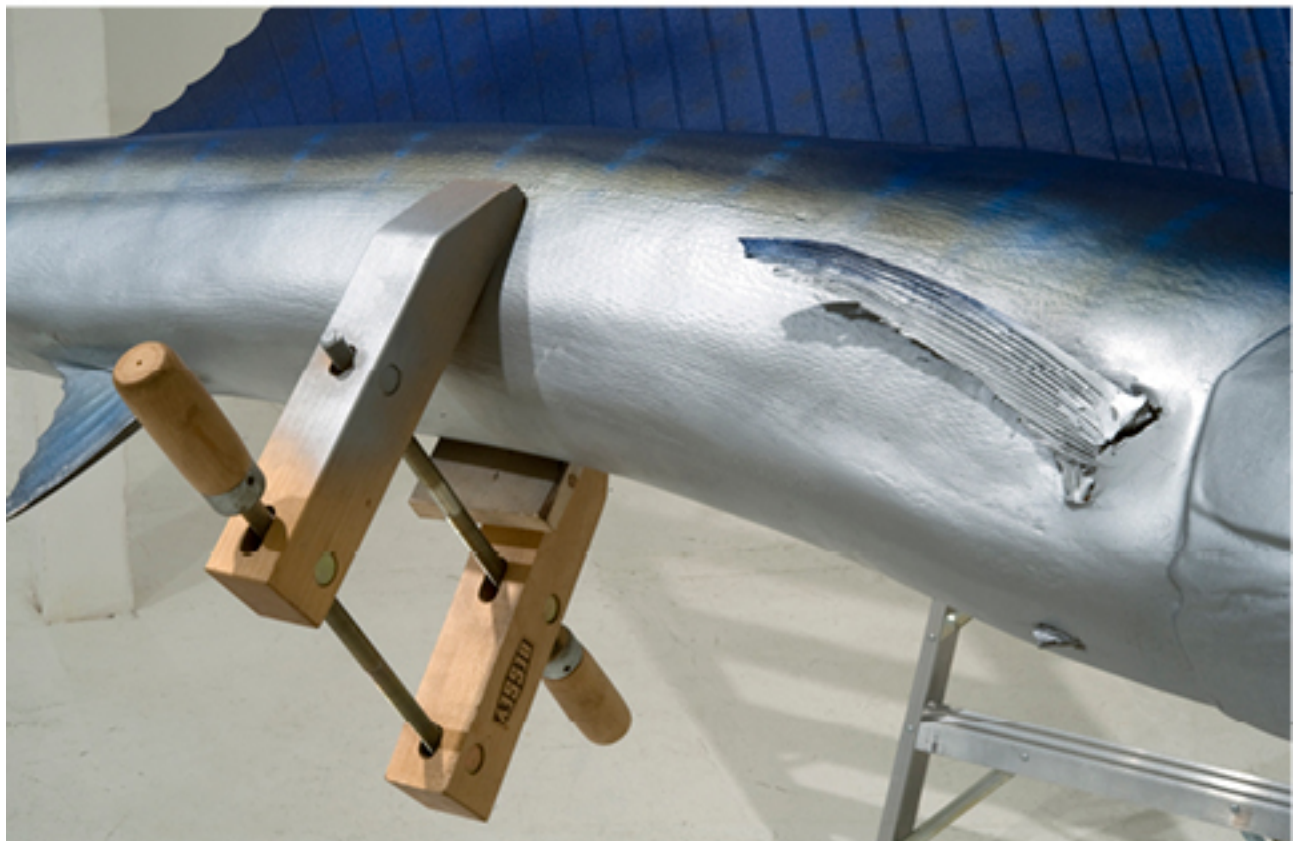
traversing the Amazon Basin.



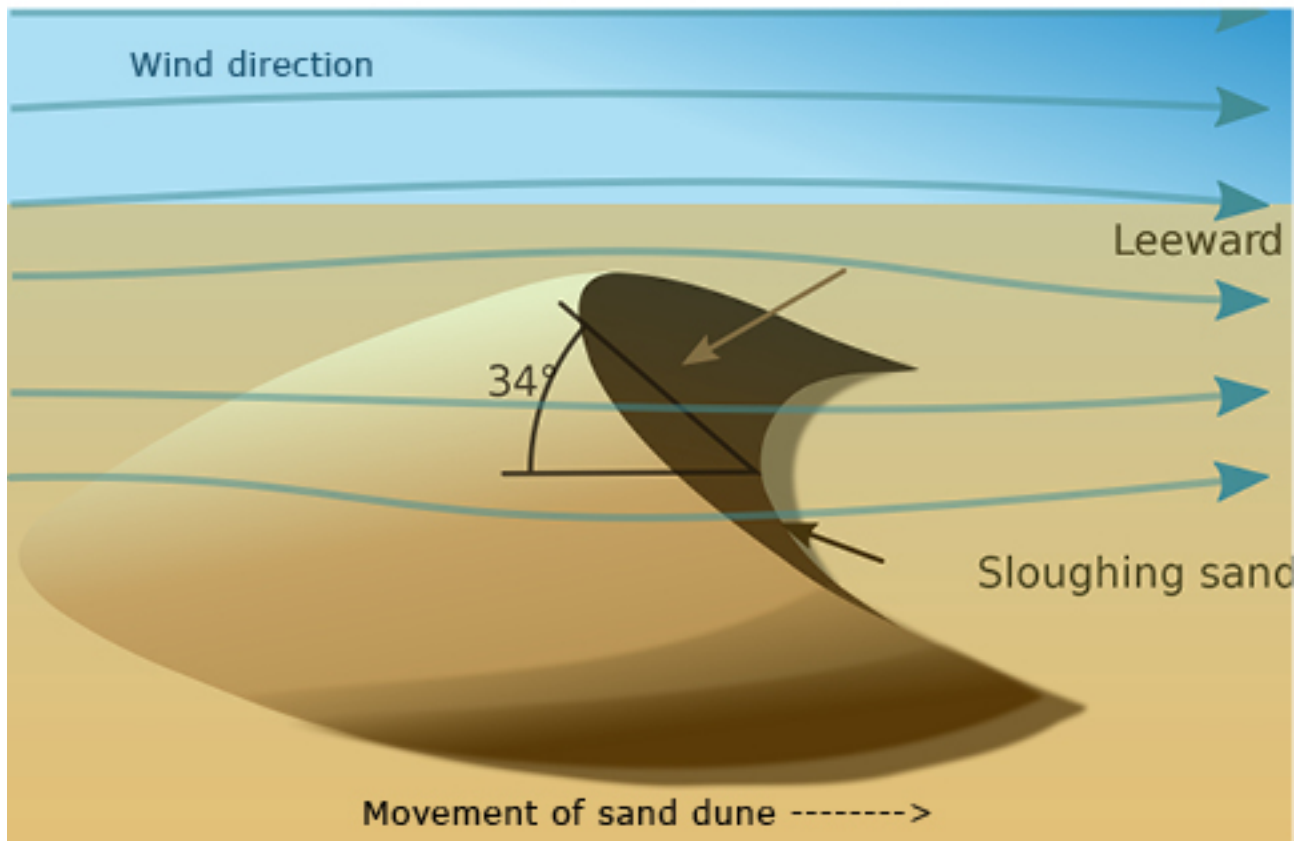
InterOceanica Highway, Peru>Brazil. 2011. Dye sublimation prints on vinyl, grommets, wood crates shipped over the Atlantic Ocean, hardware, paint. Dimensions variable. Installation in Bad Tölz, Germany



Adjustable Sculpture with Sailfish. 2011
Aluminum ladder, wood, clamps, altered sailfish mount, enamel paint
96 x 108 x 84 inches



Adjustable Sculpture with Sailfish. 2011



Three Dune Formations. 2012
 Wood, asphalt shingles, aluminum drip edge, hardware
 48 x 112 x 56.5 inches



Balcony with Landscape and View. 2010
Steel, oak tree form regional countryside, sisal rope, hardware
114 x 54 x 48 inches



Balcony with Landscape and View. 2010



Balcony with Landscape and View. 2010



Upside Down Boardwalk. 2009
Pressure treated lumber, hardware
96 x 65 x 120 inches



Upside Down Boardwalk. 2009



Adaptable Boardwalk (with three genetic drifts). 2011
 Lumber, hardware, forklifts, London Plantetrees
 18 x 90 x 60 feet (approx.) Installation at Bold Tendencies 5, London



Adaptable Boardwalk (with three genetic drifts). 2011



Adaptable Boardwalk (with three genetic drifts). 2011



Unfinished Section of Sidewalk with Palms. 2008
Concrete, rebar and palms
18 x 30 x 24 inches



Cut, Clear, Pave, Sell (repeat). 2010
De-commissioned telephone poles, forklift, ratcheting belt clamps
10 x 6 x 11.5 feet. Installation at Tanya Bonakdar Gallery



Cut, Clear, Pave, Sell (repeat). 2010



Cut, Clear, Pave, Sell (repeat). 2010



Residual Sculpture with Tracks. 2011
Lightweight concrete, perlite, wire lath
6.5 x 140 x 68 inches. Residual performative sculpture.



Graphite Dolmen Site. 2007

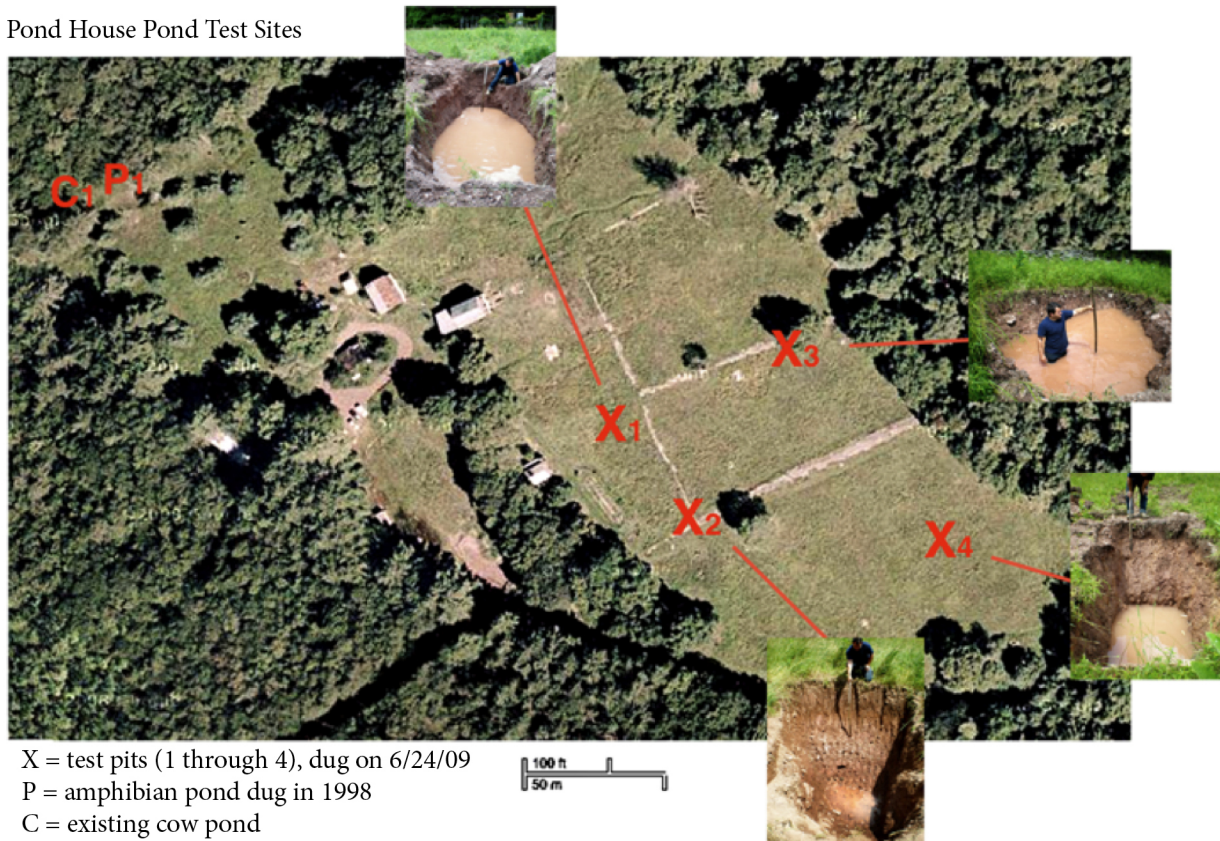
Siliciclastic rock, graphite, wax

66 x 42 x 54 inches. Installation at D'Amelio Terras Gallery



Graphite Dolmen Site. 2007

Pond House Pond Test Sites



Test Site #3, Day 3
6/26/09



Test Site #3, Day 7
6/30/09

Pond House Pond. 2009 – 2012

A project to design and build a pond and amphibious pond house; in collaboration with Mark Dion, J. Morgan Puett, Mark Thomann, and Natalie Jeremijenko.

Mildred's Lane Historical Society, Beach Lake, PA



Six Dozen Eggs, Concrete, Rebar. 2009
Six dozen eggs, concrete, rebar
32 x 18 x 18 inches