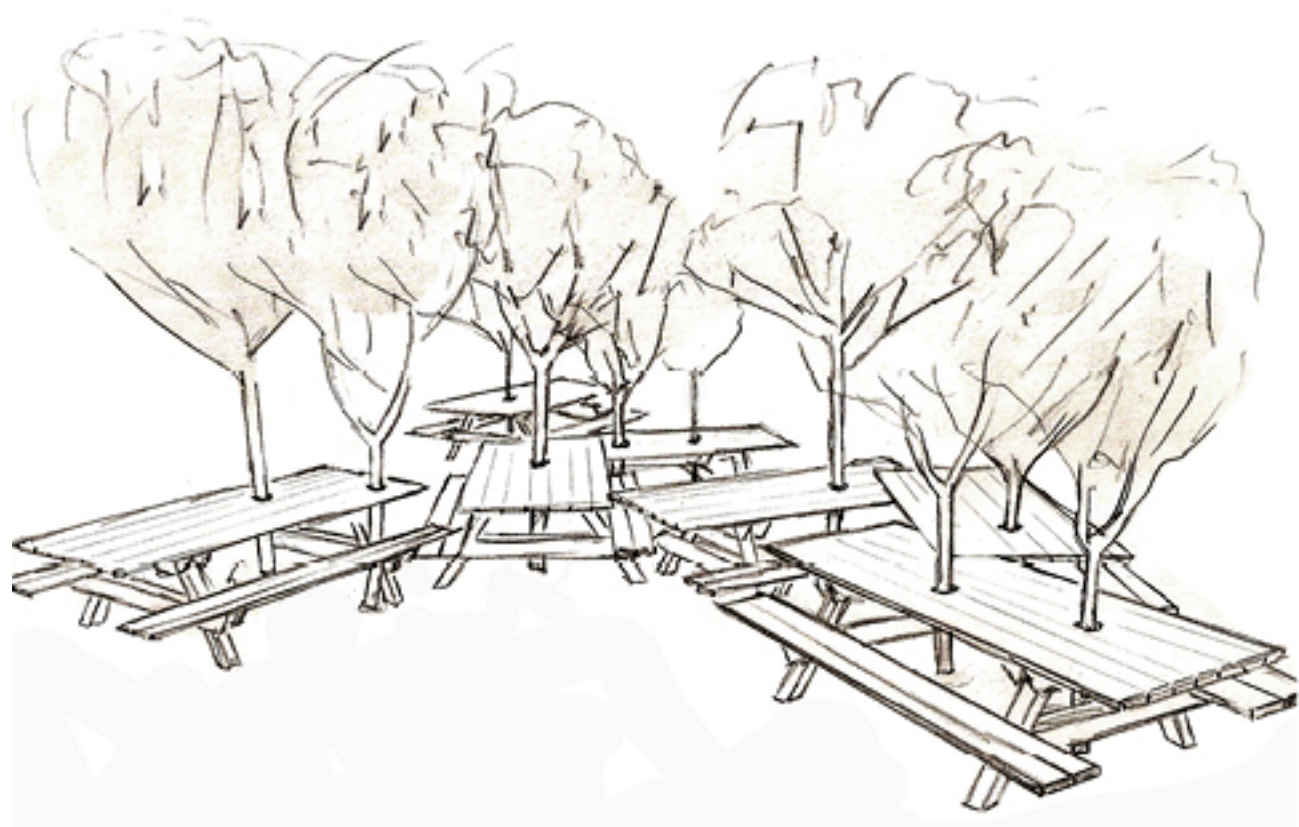


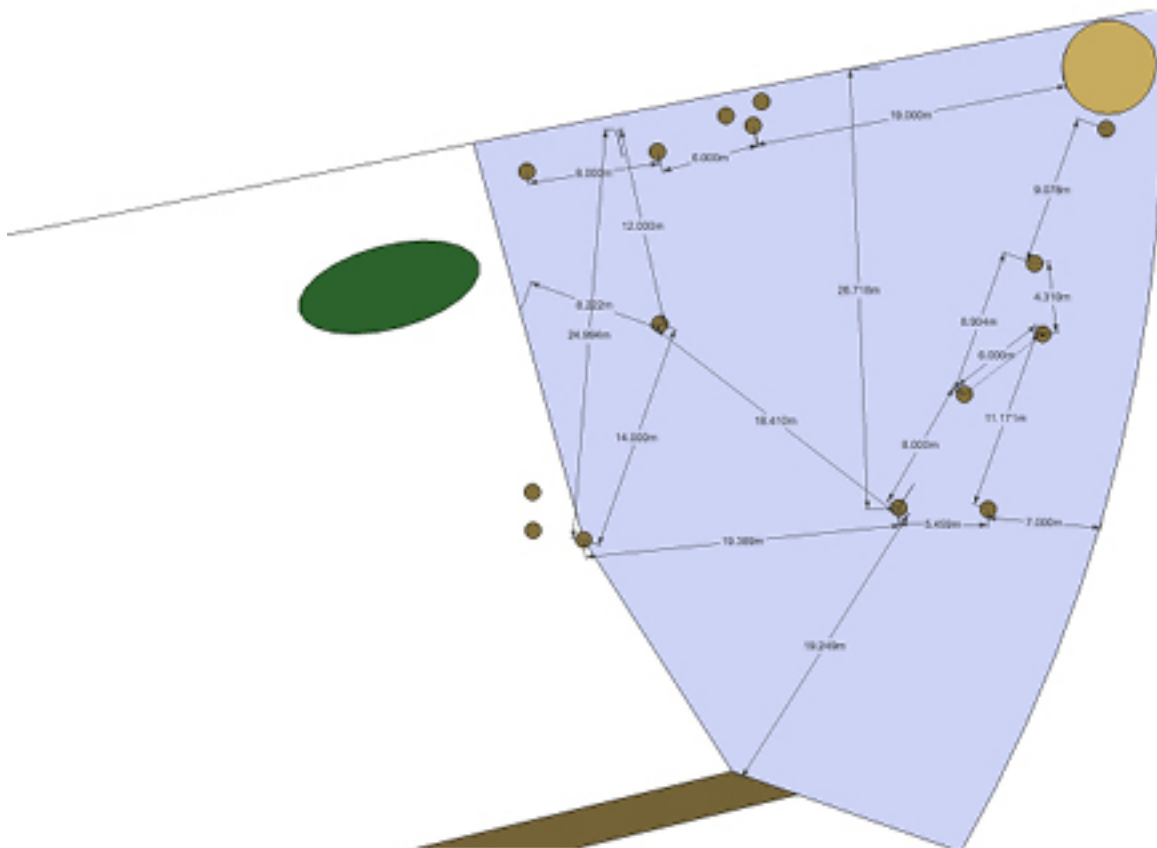
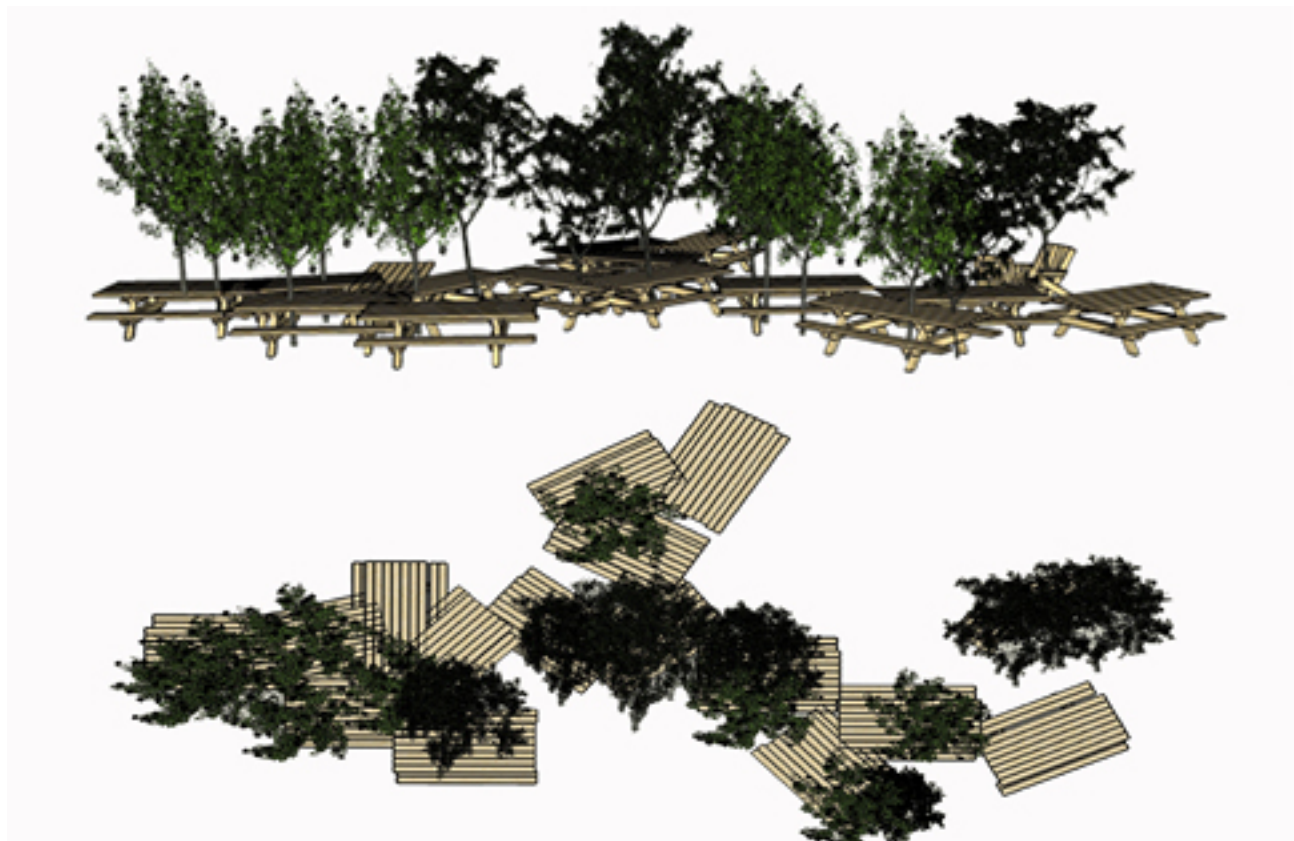
2012

Picnic Grove

Douglas fir, hardware, Silver birch trees.
Dimensions Variable

Installation at Cass Sculpture Foundation,
West Sussex, UK





(Below) Existing site indicating newly constructed picnic tables, chairs and planted saplings

Picnic Grove is a work built out of custom-made outdoor wooden furniture and spread over the entire 18,000m of the Deer Hut Field at Cass Sculpture Foundation.

The 34 picnic tables and garden chairs are constructed in an interlocking manner, with trees heedlessly growing through the furniture like opportunistic weeds. As the picnic tables traverse the field and impose themselves on the landscape, the trees perforate the structures like a verdant grove, creating ambiguity as to which is dominant.

While visitors are encouraged to utilize the installation for communal enjoyment, they will also find themselves negotiating the playful interruptions created by the erratic placement of the trees, fostering a similar sense of ambiguity as to who is imposing on whom.

—Excerpted from the Cass Sculpture Foundation press release









